

FINGER SPRING WASHERS

Stock sizes in high carbon steel

Our washers are designed to counteract noise, excess wear and vibrations, especially at high speeds. They promote efficiency and smooth operation, reducing skidding wear on rotating elements, as in ball-bearing applications.

They are also extremely useful in cases of unavoidable loose internal clearance due to special application conditions.

Material

High Carbon Steel Commercial Type 1074— Certified to ASTM-A684

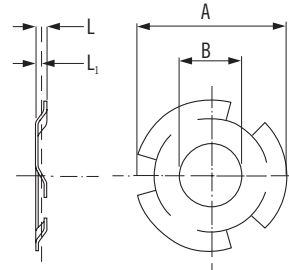
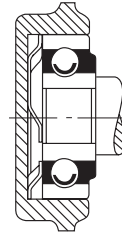
Certificate of compliance available upon request— Certificate of chemical analysis available at extra cost.

Finish

Plain finish suitable for various types of finishes including phosphate and black oxide processes, which reduce the possibility of hydrogen embrittlement. Please call us for recommendations on special or specific applications.

Specification

Finger height (L) is approximately 1/8 in. (3.17mm) for all sizes except F0595-010 which has approximately 3/32 in. (2.38 mm) finger height.



A= Outside Diameter
B= Inside Diameter
P₁= Load at Height

FINGER SPRING WASHERS

Catalog Number	Outside Diameter (A)***		Inside Diameter (B)		Load (P ₁) at Height		Material Thickness	For use with Bearing O.D.**		Former Catalog Number
	in	mm	in	mm	@L ₁ .062 in	@L ₁ 1.577 mm		in	mm	
					lb	N				
F0595-010*	0.595	15.11	0.312	7.92	0.3-1.0	1.33-4.45	0.010	0.6299	16.0	S-04
F0728-006	0.728	18.49	0.344	8.74	4-8	17.79-35.6	0.006	0.748	19.0	S-05
F0846-006	0.846	21.49	0.453	11.51	3-7	13.34-31.1	0.006	0.8661	22.0	S-102
F0846-008	0.846	21.49	0.453	11.51	9-14	40.0-62.2	0.008	0.8661	22.0	S-102A
F0926-007	0.926	23.52	0.453	11.51	6-10	26.7-44.5	0.007	0.9449	24.0	S-08
F0926-010	0.926	23.52	0.344	8.74	21-30	93.3-133.4	0.010	0.9449	24.0	S-08A
F1004-006	1.004	25.50	0.516	13.11	5-10	22.2-44.5	0.006	1.0236	26.0	S-09A
F1004-007	1.004	25.50	0.516	13.11	7-13	31.1-57.8	0.007	1.0236	26.0	S-09
F1164-009	1.164	29.57	0.688	17.48	8-14	35.6-62.2	0.009	1.1811	30.0	S-10
F1164-010	1.164	29.57	0.406	10.31	14-23	62.2-102.2	0.010	1.1811	30.0	S-10B
F1164-018	1.164	29.57	0.688	17.48	55-81	244.5-360	0.018	1.1811	30.0	S-10A
F1240-008	1.240	31.50	0.688	17.48	9-15	40-66.7	0.008	1.2598	32.0	S-12
F1240-009	1.240	31.50	0.563	14.30	15-22	66.7-97.8	0.009	1.2598	32.0	S-12A
F1240-010	1.240	31.50	0.688	17.48	14-23	62.2-102.2	0.010	1.2598	32.0	S-12B
F1360-011	1.360	34.54	0.814	20.68	10-17	44.5-75.6	0.011	1.378	35.0	S-15
F1360-014	1.360	34.54	0.814	20.68	16-26	71.1-115.6	0.014	1.378	35.0	S-15A
F1555-014	1.555	39.50	0.971	24.66	13-23	57.8-102.2	0.014	1.5748	40.0	S-17
F1555-018	1.555	39.50	1.000	25.40	28-42	124.5-186.7	0.018	1.5748	40.0	S-17A
F1830-016	1.830	46.48	1.189	30.20	14-26	62.2-115.6	0.016	1.8504	47.0	S-20
F2022-019	2.022	51.36	1.359	34.52	13-27	57.8-120.0	0.019	2.0472	52.0	S-25

SPEC

TO ORDER: WWW.ASRAYMOND.COM OR SEE PHONE & FAX NUMBERS ON BACK COVER

* This washer design has 3 fingers only. All others have 6 fingers.

** Not adapted to some special shaped bearings or bearings with double-protruding seals.

*** Maximum outside diameter of washer to be the same as specified bearing outside diameter.



Area with horizontal lines for notes.



CHECK OUR WEB SITE. WE ARE ON-LINE AT WWW.ASRAYMOND.COM.

TO ORDER: WWW.ASRAYMOND.COM OR SEE PHONE & FAX NUMBERS ON BACK COVER

SPEC

